

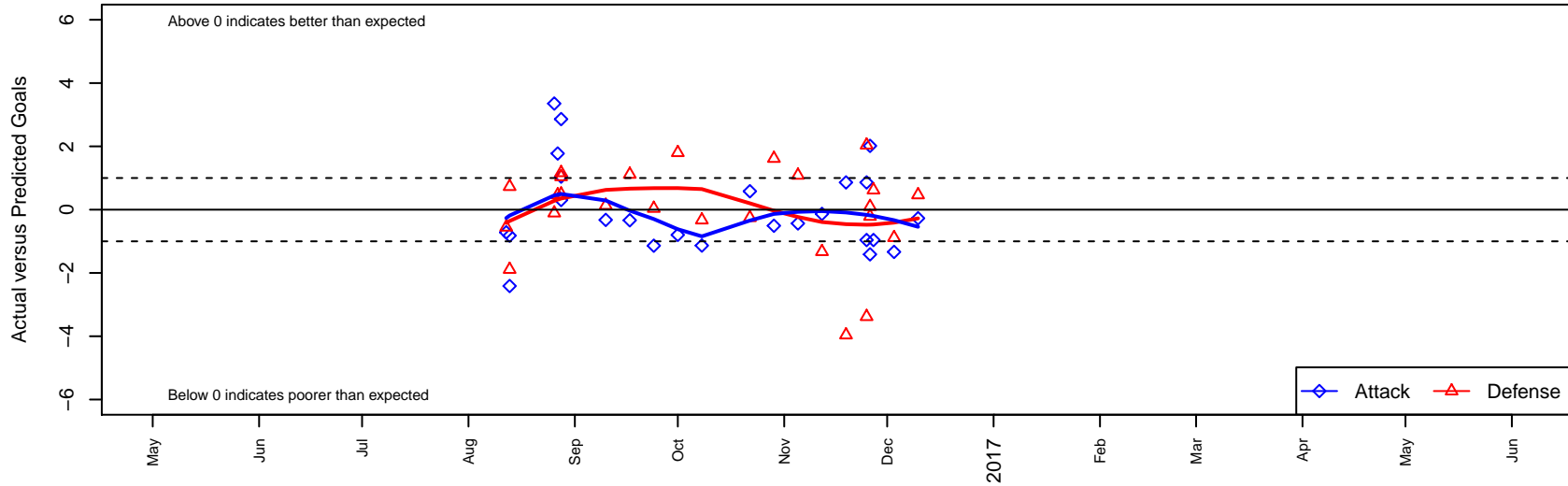
NSC Kingsmen White B06

Northshore SC
 Woodinville, WA
 B06 total strength=518
 attack=0.52 defense=0.27
 fall league = NPSL Div 2 (06) U11

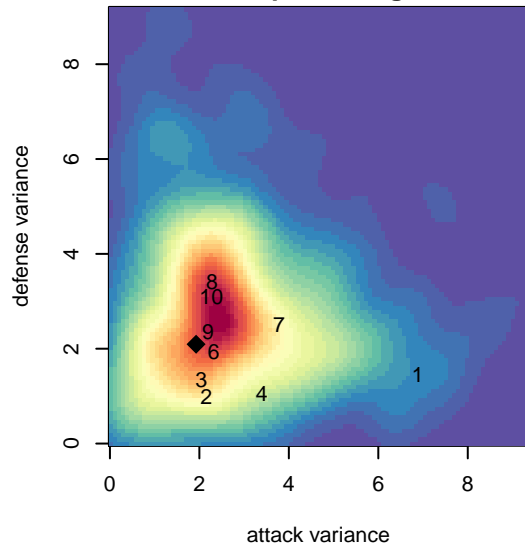
alt names used:
 NSC B06 Kingsmen White
 NSC KINGSMEN (WA)
 NSC Kingsmen
 NSC B06 Kingsmen

Venues played:
 2016 REDAPT Cup Silver U11
 2016 Sky River BU11
 2016 NPSL Division 2 (06) U11
 2016 Cranberry Cup U11

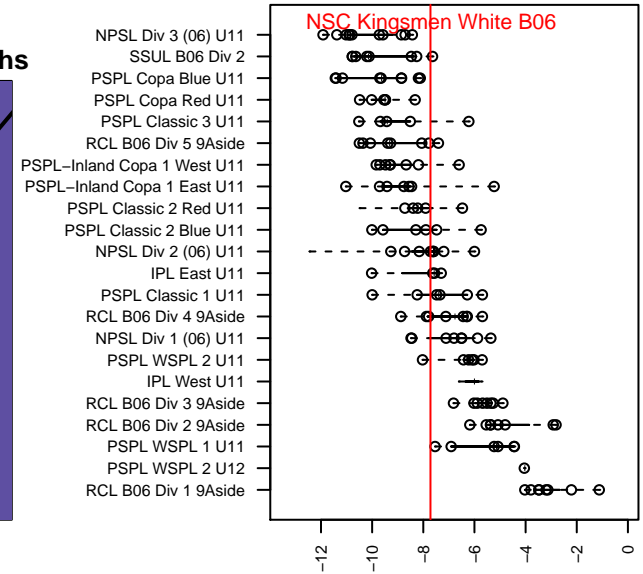
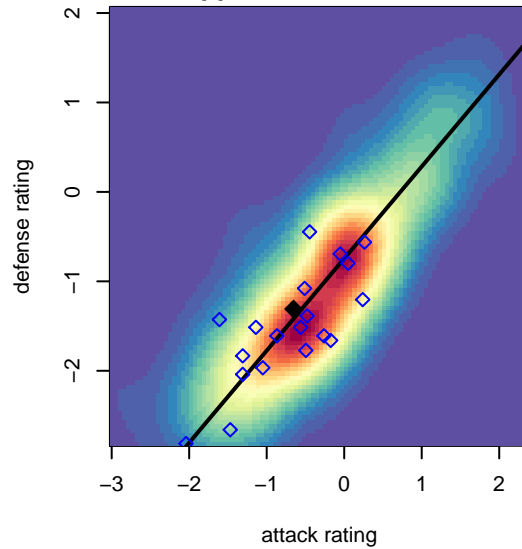
NSC Kingsmen White B06
 Dots are actual minus expected GF (blue circles) and GA (red triangles).
 Blue line is smoothed change in attack strength. Red is smoothed change in defense strength.



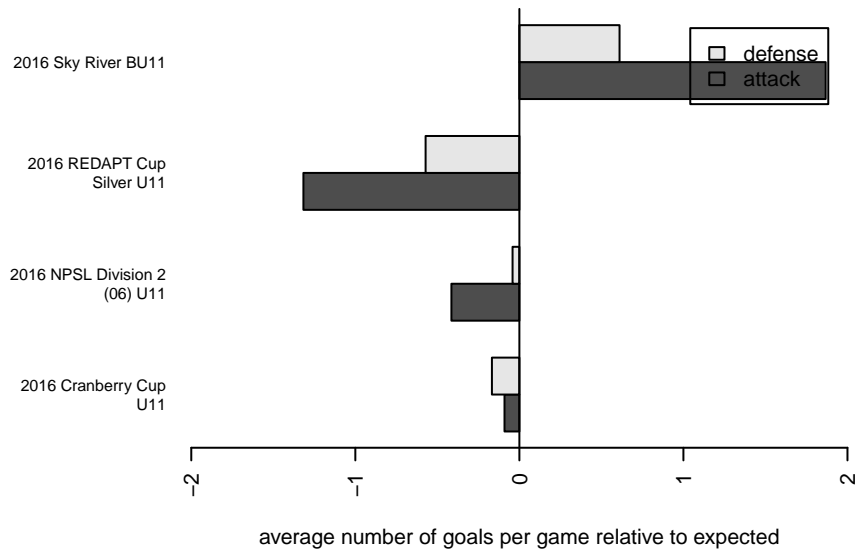
**attack and defense variance (black dot)
relative to other teams
and top 10 in region**



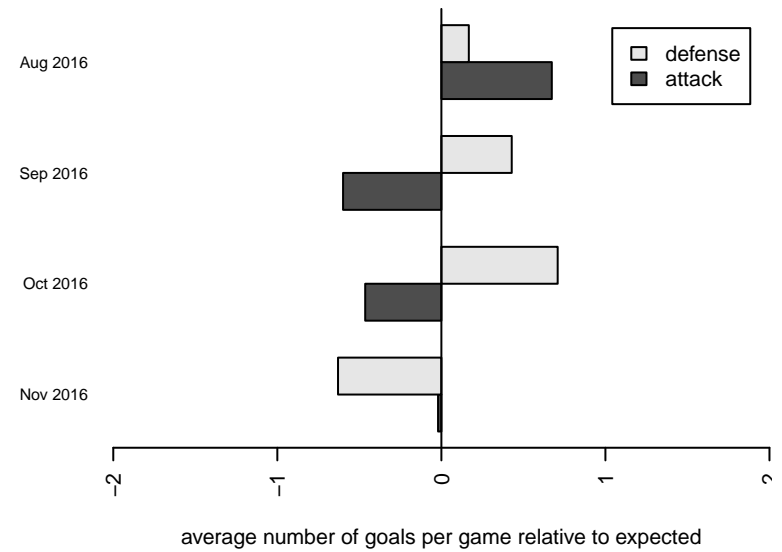
**attack and defense rating
relative to others at age
and all opponents in last 13 months**



Performance relative to 13 month average



Performance relative to 13 month average



| date | home | | away | | venue | pred.home | pred.away |
|-------------|----------------------------|----|-------------------------------|---|-------------------------------|------------------|------------------|
| 2016-12-10 | BIFC Blue B06 | 3 | NSC Kingsmen White B06 | 1 | 2016 NPSL Division 2 (06) U11 | 3.47 | 1.27 |
| 2016-12-03 | Storm King B06 | 2 | NSC Kingsmen White B06 | 1 | 2016 NPSL Division 2 (06) U11 | 1.11 | 2.34 |
| 2016-11-27 | NSC Knights Green B06 | 4 | NSC Kingsmen White B06 | 0 | 2016 Cranberry Cup U11 | 4.62 | 0.96 |
| 2016-11-26 | MRFC White B06 | 1 | NSC Kingsmen White B06 | 6 | 2016 Cranberry Cup U11 | 1.10 | 3.98 |
| 2016-11-26 | NSC Kingsmen White B06 | 6 | NSC Knights Black B06 | 1 | 2016 Cranberry Cup U11 | 7.41 | 0.79 |
| 2016-11-25 | NSC Skilz White B06 | 0 | NSC Kingsmen White B06 | 3 | 2016 Cranberry Cup U11 | 2.04 | 2.14 |
| 2016-11-25 | NSC Kingsmen White B06 | 0 | NSC Knights Green B06 | 8 | 2016 Cranberry Cup U11 | 0.96 | 4.62 |
| 2016-11-19 | NSC Kingsmen White B06 | 3 | NSC Skilz White B06 | 6 | 2016 NPSL Division 2 (06) U11 | 2.14 | 2.04 |
| 2016-11-12 | Bellevue United Select B06 | 2 | NSC Kingsmen White B06 | 2 | 2016 NPSL Division 2 (06) U11 | 0.67 | 2.13 |
| 2016-11-05 | NSC Kingsmen White B06 | 1 | Seattle United W White B06 | 1 | 2016 NPSL Division 2 (06) U11 | 1.44 | 2.09 |
| 2016-10-29 | NSC Kingsmen White B06 | 2 | Seattle United S White B06 | 1 | 2016 NPSL Division 2 (06) U11 | 2.51 | 2.62 |
| 2016-10-22 | FME Xtreme B06 | 4 | NSC Kingsmen White B06 | 2 | 2016 NPSL Division 2 (06) U11 | 3.75 | 1.42 |
| 2016-10-08 | NSC Kingsmen White B06 | 1 | Bellevue United Select B06 | 1 | 2016 NPSL Division 2 (06) U11 | 2.13 | 0.67 |
| 2016-10-01 | Lake Hills Hurricanes B06 | 1 | NSC Kingsmen White B06 | 2 | 2016 NPSL Division 2 (06) U11 | 2.80 | 2.80 |
| 2016-09-24 | NSC Skilz White B06 | 2 | NSC Kingsmen White B06 | 1 | 2016 NPSL Division 2 (06) U11 | 2.04 | 2.14 |
| 2016-09-17 | NSC Kingsmen White B06 | 2 | Storm King B06 | 0 | 2016 NPSL Division 2 (06) U11 | 2.34 | 1.11 |
| 2016-09-10 | NSC Kingsmen White B06 | 3 | Mercer Island FC Sounders B06 | 2 | 2016 NPSL Division 2 (06) U11 | 3.32 | 2.13 |
| 2016-08-28 | Seattle United NE Blue B06 | 1 | NSC Kingsmen White B06 | 3 | 2016 Sky River BU11 | 1.49 | 2.70 |
| 2016-08-28 | NSC Kingsmen White B06 | 5 | NSC Skilz White B06 | 1 | 2016 Sky River BU11 | 2.14 | 2.04 |
| 2016-08-28 | WA Rush Azul B06 | 0 | NSC Kingsmen White B06 | 5 | 2016 Sky River BU11 | 1.17 | 3.96 |
| 2016-08-27 | NSC Kingsmen White B06 | 10 | IFC Select White B06 | 0 | 2016 Sky River BU11 | 8.23 | 0.46 |
| 2016-08-26 | NSC Kingsmen White B06 | 7 | GS Surf E B06 | 1 | 2016 Sky River BU11 | 3.65 | 0.89 |
| 2016-08-13 | NSC Kingsmen White B06 | 0 | FC Edmonds Surge B06 | 4 | 2016 REDAPT Cup Silver U11 | 2.41 | 2.11 |
| 2016-08-13 | NC Alliance Rebels B06 | 2 | NSC Kingsmen White B06 | 0 | 2016 REDAPT Cup Silver U11 | 2.73 | 0.82 |
| 2016-08-12 | NSC Kingsmen White B06 | 1 | Crossfire Premier D B06 | 5 | 2016 REDAPT Cup Silver U11 | 1.72 | 4.45 |